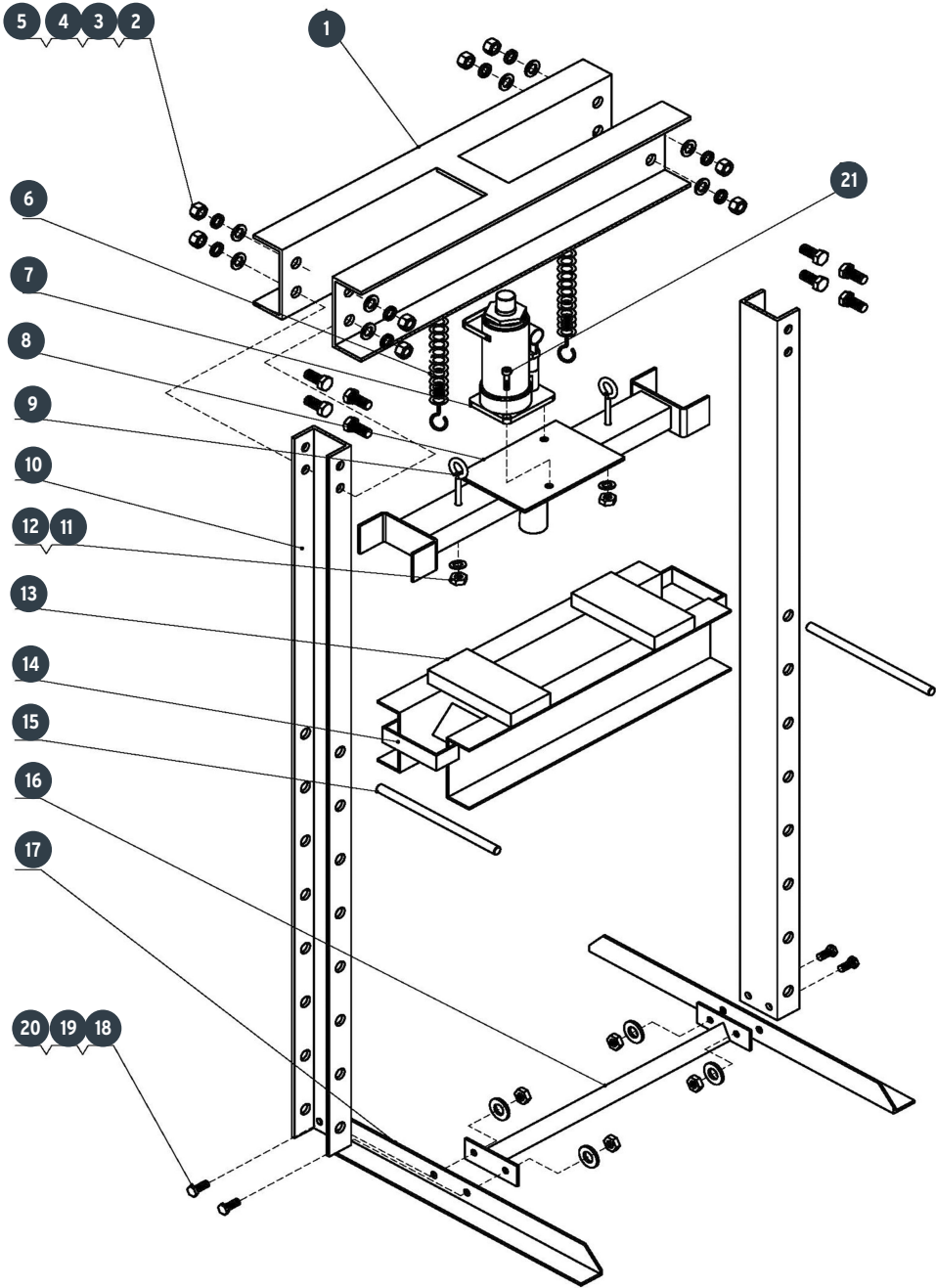


A

| No. | Código | Clave | Descripción |
|-----|--------|--------------|------------------------|
| 1 | 941700 | R1-PREH-20G | Travesaño superior |
| 2 | 941701 | R2-PREH-20G | Tornillo M16x35 |
| 3 | 941702 | R3-PREH-20G | Arandela plana 16 |
| 4 | 941703 | R4-PREH-20G | Arandela de presión 16 |
| 5 | 941704 | R5-PREH-20G | Tuerca M6 |
| 6 | 941705 | R6-PREH-20G | Resorte |
| 7 | 941706 | R7-PREH-20G | Ensamble de gato |
| 8 | 941707 | R8-PREH-20G | Base de Fijación |
| 9 | 941708 | R9-PREH-20G | Gancho |
| 10 | 941709 | R10-PREH-20G | Marco principal |
| 11 | 941710 | R11-PREH-20G | Arandela plana 16 |
| 12 | 941711 | R12PREH-20G | Tuerca M18 |
| 13 | 941712 | R13-PREH-20G | Placa de fijación |
| 14 | 941713 | R14-PREH-20G | Plataforma de prensa |
| 15 | 941714 | R15-PREH-20G | Barra |
| 16 | 941715 | R16-PREH-20G | Separador |
| 17 | 941716 | R17-PREH-20G | Base de prensa angular |
| 18 | 941717 | R18-PREH-20G | Tornillo M12x30 |
| 19 | 941718 | R19-PREH-20G | Arandela plana 12 |
| 20 | 941719 | R20-PREH-20G | Tuerca M12 |
| 21 | 941720 | R21-PREH-20G | Tornillo M8x16 |
| 22 | 941721 | R22-PREH-20G | Palanca de gato |
| 23 | 941722 | R23-PREH-20G | Tornillo M12x130 |

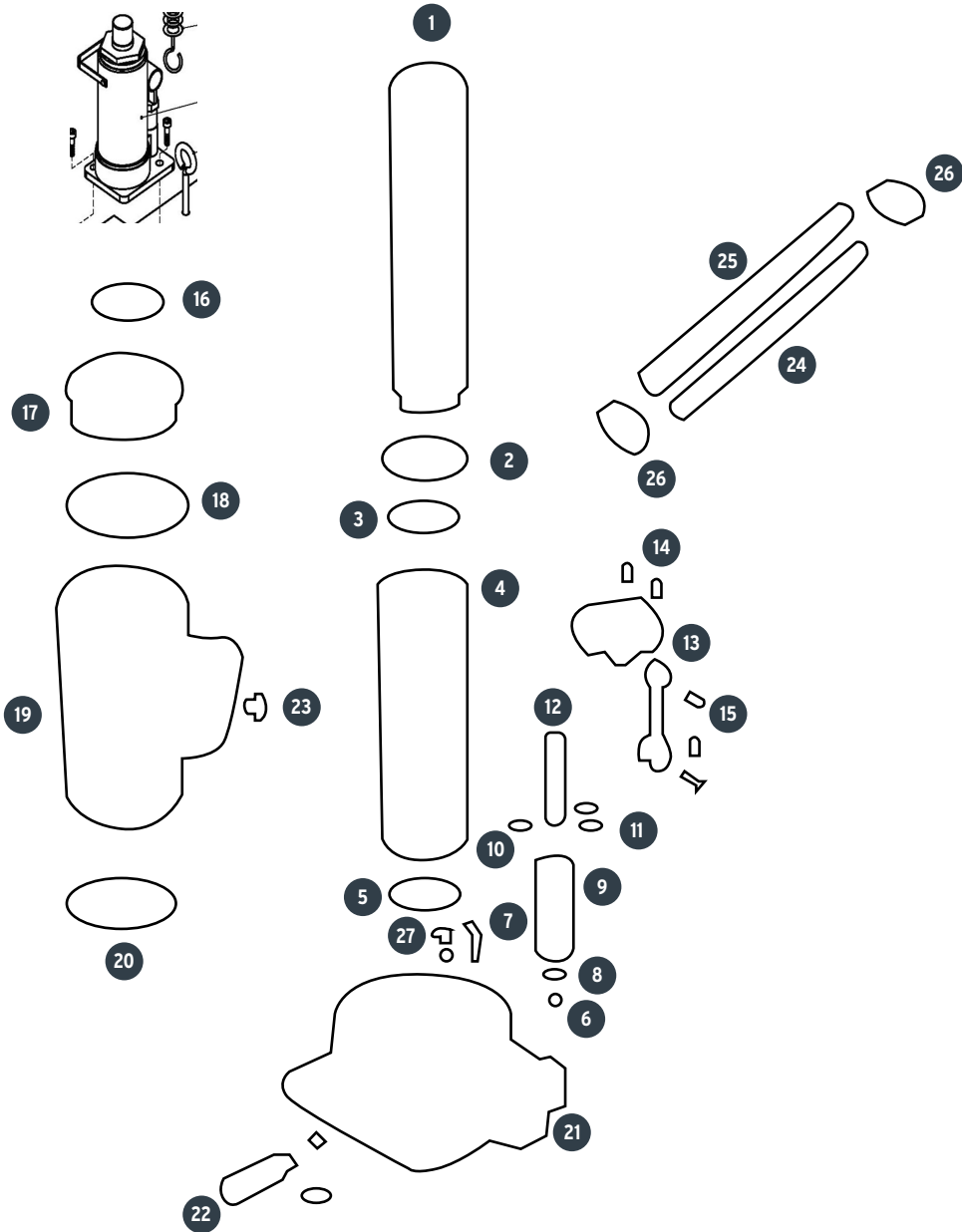


A



B

| No. | Código | Clave | Descripción |
|-----|--------|---------------|-------------------------|
| 1 | 941723 | RG1-PREH-20G | Ensamble de pistón |
| 2 | 941724 | RG2-PREH-20G | Empaque |
| 3 | 941725 | RG3-PREH-20G | Tuerca superior |
| 4 | 941726 | RG4-PREH-20G | Junta de plástico |
| 5 | 941727 | RG5-PREH-20G | Empaque |
| 6 | 941728 | RG6-PREH-20G | Junta de plástico |
| 7 | 941729 | RG7-PREH-20G | Depositogato de botella |
| 8 | 941730 | RG8-PREH-20G | Tapón de llenado |
| 9 | 941731 | RG9-PREH-20G | Junta de hule |
| 10 | 941732 | RG10-PREH-20G | Cilindro |
| 11 | 941733 | RG11-PREH-20G | Junta de cilindro |
| 12 | 941734 | RG12-PREH-20G | Protector de balín |
| 14 | 941735 | RG14-PREH-20G | Balín de acero Ø6 |
| 13 | 941736 | RG13-PREH-20G | Ens. soporte de palanca |
| 14 | 941737 | RG14-PREH-20G | Chaveta |
| 15 | 941738 | RG15-PREH-20G | Pernos |
| 16 | 941739 | RG16-PREH-20G | Pistón |
| 17 | 941740 | RG17-PREH-20G | Empaque de plástico |
| 18 | 941741 | RG18-PREH-20G | Empaque de hule |
| 19 | 941742 | RG19-PREH-20G | Arandela |
| 20 | 941743 | RG20-PREH-20G | Bomba de cilindro |
| 23 | 941744 | RG23-PREH-20G | Válvula de liberación |
| 24 | 941745 | RG24-PREH-20G | Sello |
| 25 | 941746 | RG25-PREH-20G | Balín de acero Ø3.5 |
| 26 | 941747 | RG26-PREH-20G | Base |
| 28 | 941748 | RG28-PREH-20G | Válvula de seguridad |
| 29 | 941749 | RG29-PREH-20G | Resorte |
| 30 | 941750 | RG30-PREH-20G | Tornillo opresor |
| 31 | 941751 | RG31-PREH-20G | Sello |



B

