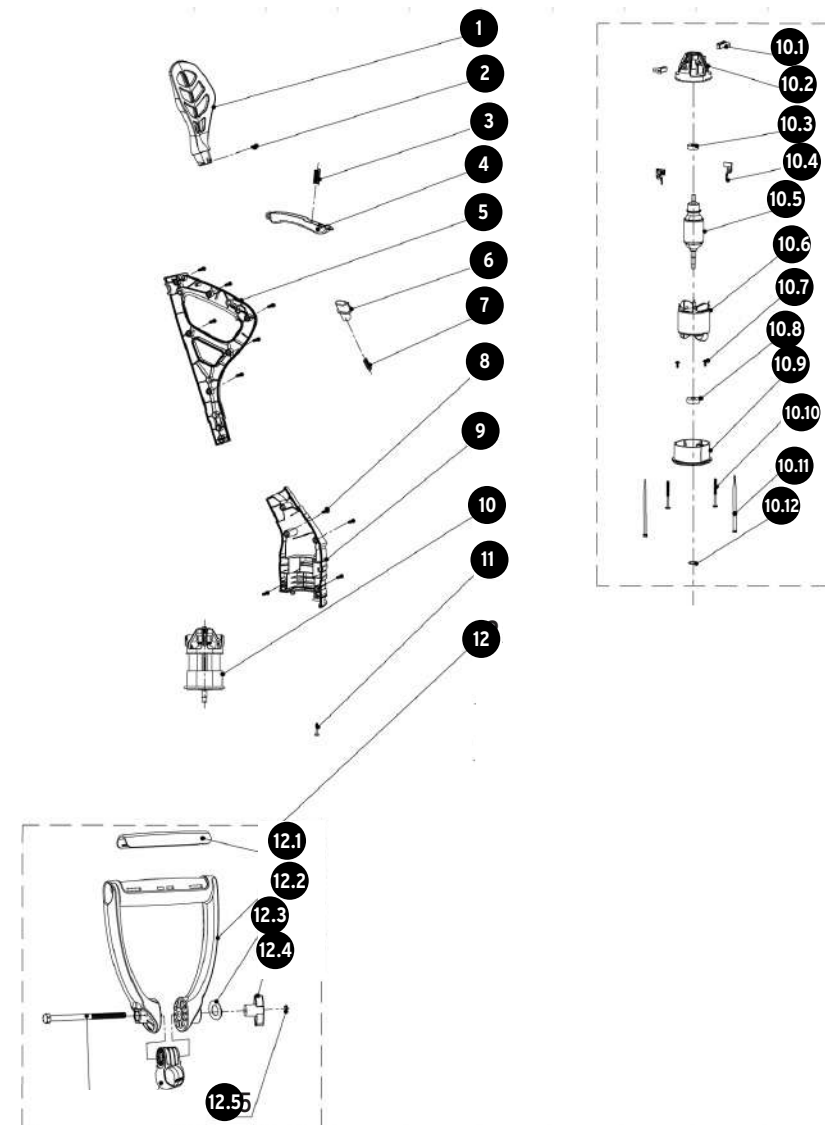


A

| No. | Código | Clave | Descripción |
|-------|--------|------------------|--------------------------|
| 1 | 936776 | R1-DES-300P2 | Mango auxiliar para codo |
| 2 | 936777 | R2-DES-300P2 | Tornillo ST4x8 |
| 3 | 936778 | R3-DES-300P2 | Resorte de gatillo |
| 4 | 936779 | R4-DES-300P2 | Gatillo |
| 5 | 936780 | R5-DES-300P2 | Carcasa de manija |
| 6 | 936781 | R6-DES-300P2 | Bloqueador |
| 7 | 936782 | R7-DES-300P2 | Resorte de bloqueo |
| 8 | 936783 | R8-DES-300P2 | Tornillo ST4x16 |
| 9 | 936784 | R9-DES-300P2 | Carcasa izquierda |
| 10 | 936785 | R10-DES-300P2 | Ensamble de motor |
| 10.1 | 936786 | R10.1-DES-300P2 | Ensamble de carbones |
| 10.2 | 936787 | R10.2-DES-300P2 | Soporte de carbones |
| 10.3 | 936788 | R10.3-DES-300P2 | Balero de bolas 626Z |
| 10.4 | 936789 | R10.4-DES-300P2 | Arnes para carbón |
| 10.5 | ACC | | Rotor |
| 10.6 | ACC | | Campo |
| 10.7 | 936790 | R10.7-DES-300P2 | Tornillo ST3x8 |
| 10.8 | 936791 | R10.8-DES-300P2 | Balero de bolas 608Z |
| 10.9 | 936792 | R10.9-DES-300P2 | Soporte de motor |
| 10.10 | 936793 | R10.10-DES-300P2 | Tornillo ST4x55 |
| 10.11 | 936794 | R10.11-DES-300P2 | Correa |
| 10.12 | 936795 | R10.12-DES-300P2 | Arandela |
| 11 | 936796 | R11-DES-300P2 | Tornillo ST4x8 |
| 12 | ACC | | Ensamble de mango |
| 12.1 | 936797 | R12.1-DES-300P2 | Manga |
| 12.2 | 936798 | R12.2-DES-300P2 | Mango auxiliar |
| 12.3 | 936799 | R12.3-DES-300P2 | Arandela plana |
| 12.4 | 936800 | R12.4-DES-300P2 | Perilla jaladera |
| 12.5 | ACC | | Tuerca M6 |

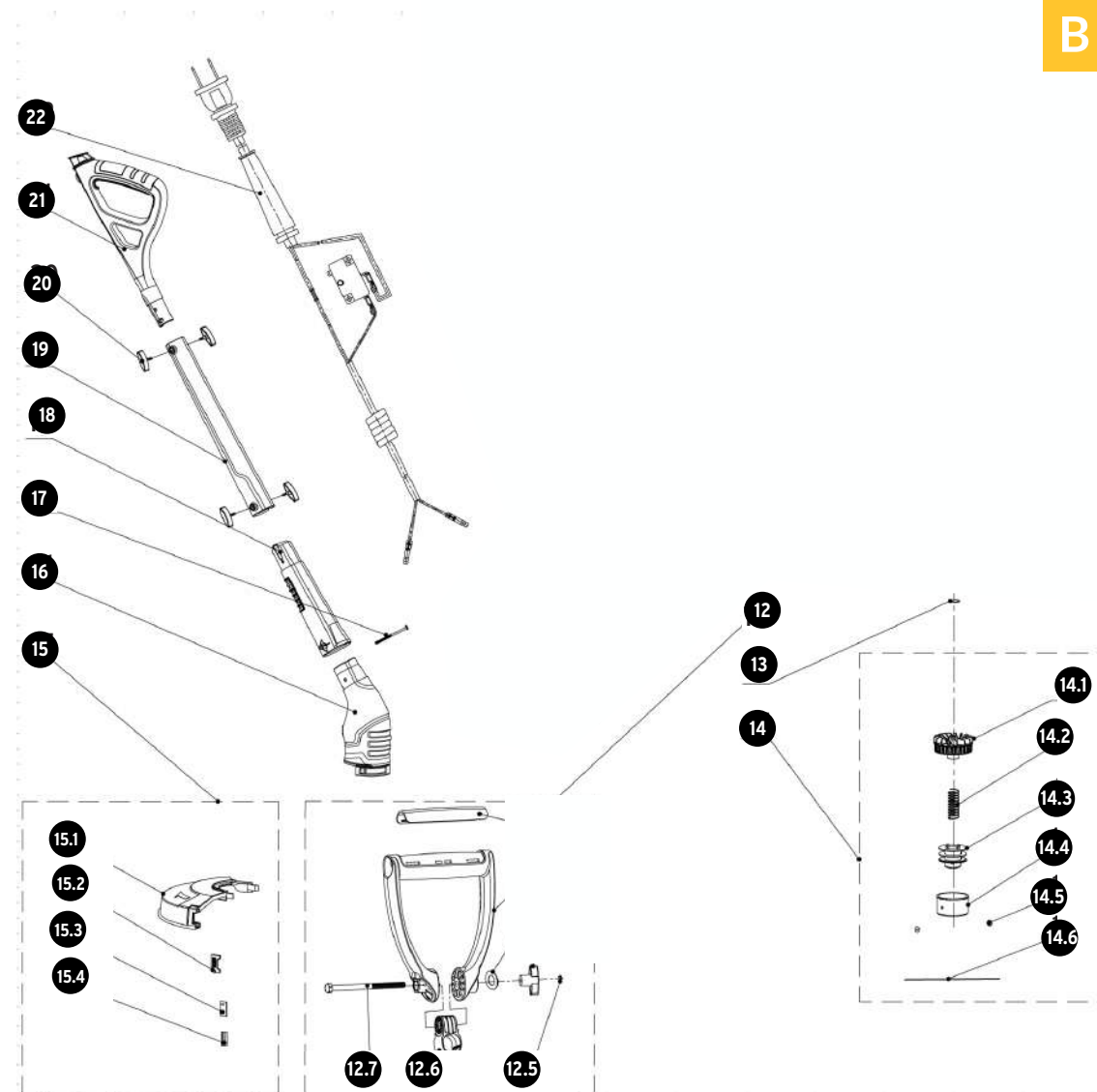


A



B

| No. | Código | Clave | Descripción |
|------|--------|-----------------|-----------------------------|
| 12.6 | 936801 | R12.6-DES-300P2 | Base de mango |
| 12.7 | 936802 | R12.7-DES-300P2 | Tornillo M6x80 |
| 13 | 936803 | R13-DES-300P2 | Arandela |
| 14 | ACC | | Ensamble de carrete |
| 14.1 | ACC | | Tapa |
| 14.2 | 936804 | R14.2-DES-300P2 | Resorte |
| 14.3 | ACC | | Repuesto |
| 14.4 | ACC | | Retén |
| 14.5 | ACC | | Remache |
| 14.6 | ACC | | Hilo |
| 15 | 936805 | R15-DES-300P2 | Ensamble de guarda |
| 15.1 | ACC | | Guarda |
| 15.2 | ACC | | Placa fija |
| 15.3 | ACC | | Navaja |
| 15.4 | ACC | | Cinta adhesiva |
| 16 | 936806 | R16-DES-300P2 | Carcasa derecha |
| 17 | 936807 | R17-DES-300P2 | Tornillo ST 4x60 |
| 18 | 936808 | R18-DES-300P2 | Tubo de aire |
| 19 | 936809 | R19-DES-300P2 | Tubo extensión |
| 20 | 936810 | R20-DES-300P2 | Perilla |
| 21 | 936811 | R21-DES-300P2 | Carcasa de manija |
| 22 | 936812 | R22-DES-300P2 | Ensamble de línea eléctrica |
| 22.1 | ACC | | Cable de alimentación |
| 22.2 | ACC | | Arnés |
| 22.3 | ACC | | Micro interruptor |
| 22.4 | ACC | | Protector de cable |
| 22.5 | ACC | | Terminal eléctrica |



B

